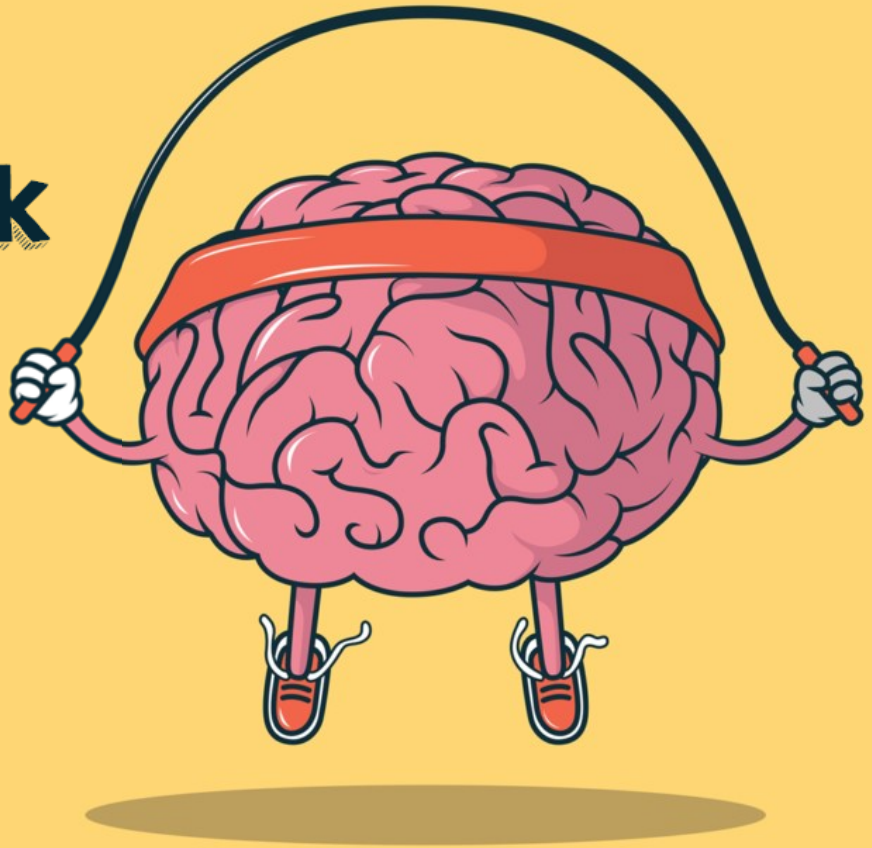


W/C: 14.06.2021

This week we are learning to...



Literacy - Comprehension

This week the children will be working towards mastery of their written comprehension skills. They will be focusing on the skills required to extract key information from a given text and interpret it to answer key questions, learning the helpful strategy of 'recycling' the vocabulary from the question within their answers. At home you can do this verbally during your bedtime stories, encouraging your child to answer in full sentences.

Literacy - Creative Writing

This week the children will be continuing to perfect the art of story writing by working through the structure of a beginning, middle and end. The children will continue to analyse each section of a story and using a picture stimulus will create their own using a success criteria checklist as a reference point when writing. At home, you can support this by encouraging your child to tell verbal stories when role playing with Lego.

Maths - Time

This week in Maths Project the children will continue to build upon their prior learning around the topic of 'Time'. The children will be learning to read an analogue clock face at 5 minute and then 1 minute intervals and calculate durations of time. At home, you can provide your child with an analogue watch to support their ability to read the time, asking them to tell the time at different intervals during the day.

PSHEE—Everyone's Unique

This week the children will be looking at what makes them unique and why they should be proud of this. They will look at their different skill sets, cultural backgrounds, likes and dislikes as well as their personal needs. As part of this lesson the children will gain an understanding of the importance of respecting and accepting others around them and gain an insight into inclusivity and the opportunity to develop empathy. At home, encourage your child to think about what makes them unique. They could create a Google Slides presentation or a poster to share with the class. This will support them with their conversations during the PSHEE session.