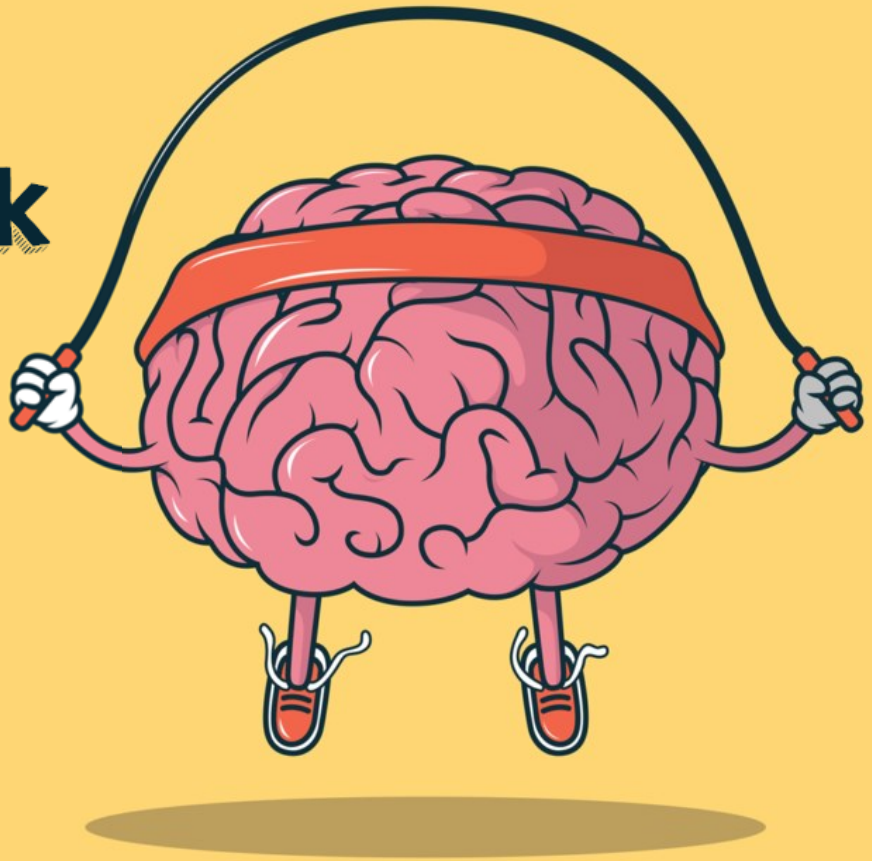


W/C: 05.02.2024

**This week
we are
learning
to...**



Literacy

In our writing lessons this week, the children will study how to use similes effectively in their writing. A simile is a figure of speech involving the comparison of one thing with another thing of a different kind, used to make a description more emphatic or vivid (e.g. as brave as a lion). The effect of a simile is to provide the reader with a more descriptive image of the thing that is being described. At home, why not try encouraging your child to enrich their writing by using the above grammar as part of a journal entry documenting their week.

Maths

In Maths this week, the children will consider written strategies to solve complex multiplication problems. They will solve multi-steps word problems and will use learned methods to calculate their answer including the RUCSAC method and using the inverse to check their answers. At home, encourage your child to practise their multiplication facts.

Science

In Science this week, the children will continue their new project about Materials. We will examine the buoyancy of different materials through an engaging experiment. The children will investigate and understand the key terminology 'floating and sinking'. They will identify and classify objects into groups that either float or sink. They will reflect on the results and consider what has transpired. At home, why not encourage your child to explore buoyancy of different materials at the Science Museum.